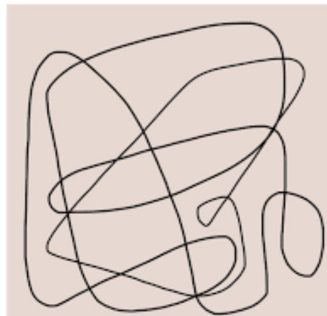


ABSTRACT

Creations

By: Lourdes Carvajal



The Collection



Hot Orchid
100% Acrylic
Size 1
Color A



Black shadow
100% Acrylic
Size 1
Color B



Ice Blue
100% Acrylic
Size 1
Color C



Mondrian Blue
100% Acrylic
Size 1
Color D



Vanilla white
100% Acrylic
Size 1 & 0.5
Color E

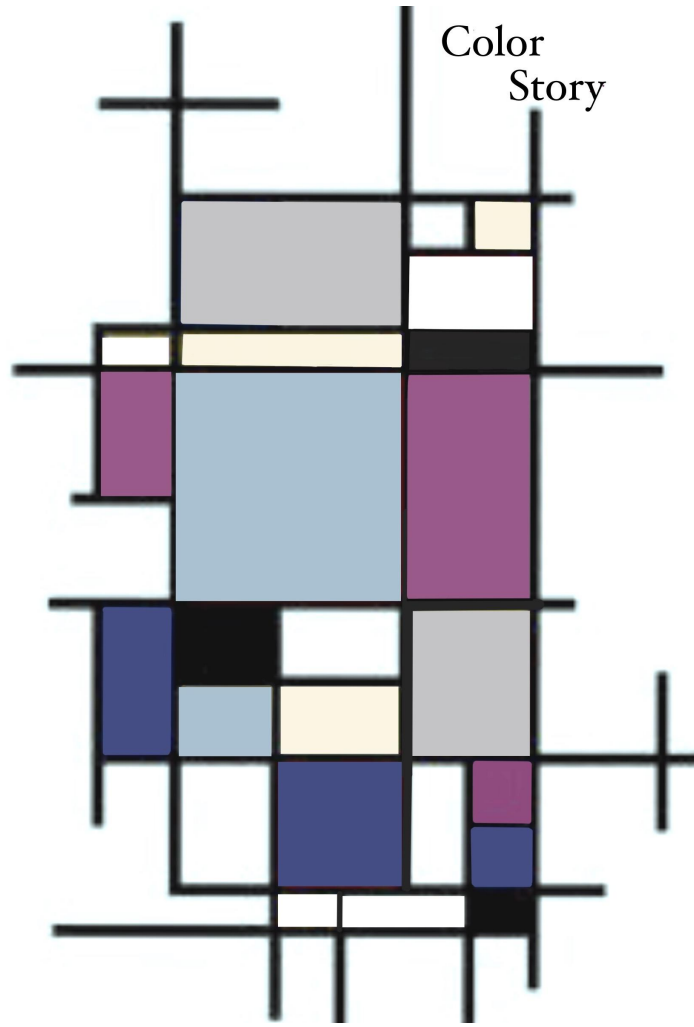
Metallic silver
100% polyester
Size 0.5
Color F

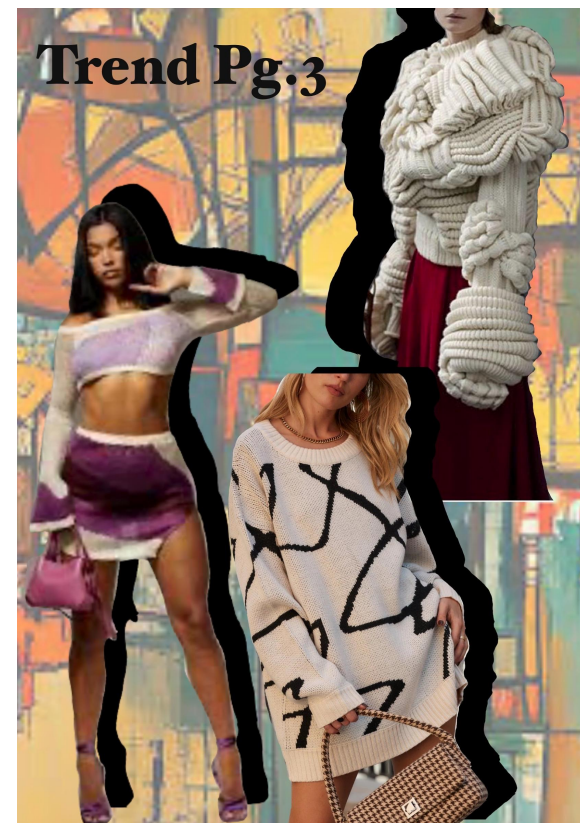


For my Knitwear collection I have chosen the art form of Abstract. The reason being is when I see a sweater with stripes and other patterns its almost like an abstract painting. For my ideas I wanted to utilize the shapes and lines in my collection to create fun, bold and funky sweaters that attracts a young clientele. Cool colors and geometric patterns is an other key element I wish to incorporate in my designs. Line work is a key element to tie in with the theme of Abstract.

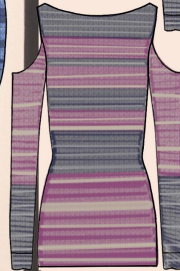
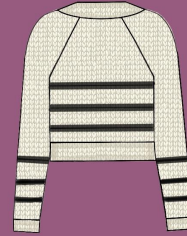
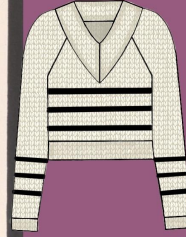
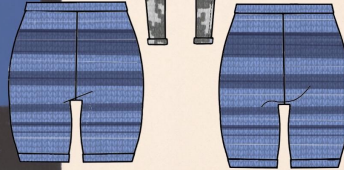
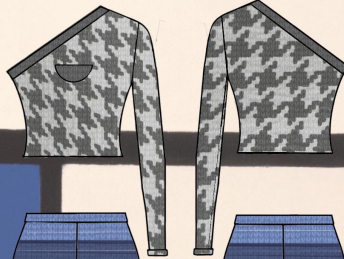
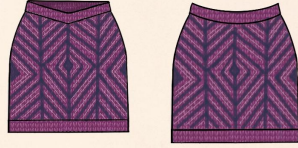


Color Story





The Designs



Cast off edge



Swatch #1

Jersey stitch with
engineered stripe

8 1/2"
Tension 7

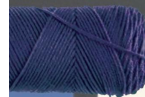
Front



Back



Color A



Color B



Color E



Color F

Cast off edge

K 60 C



Swatch #2

Jersey stitch with
expanding
triangle pattern

7 1/2"

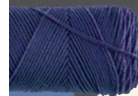
Tension 7

Color A in
A feed &
Color B & F
In B Feed
Normal setting

5 1/2" E Wrap Start
40 needles



Color A



Color B



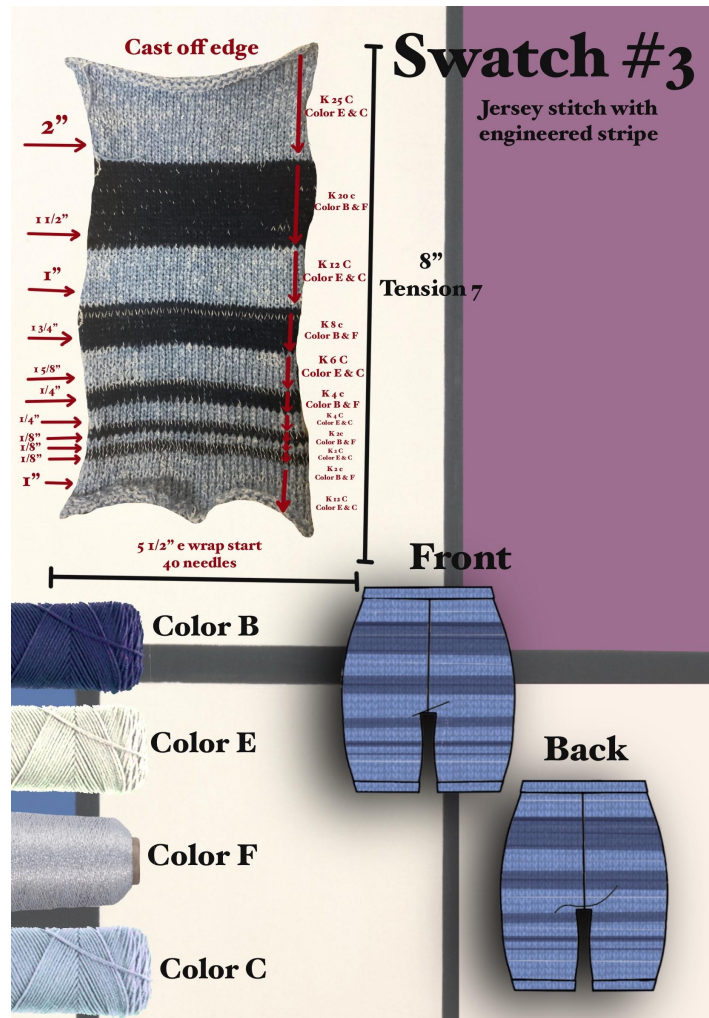
Color F

Front



Back





Cast off edge

Swatch #4

Jersey Stitch with
multi triangular
pattern

7 1/2"

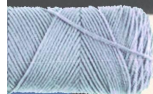
Tension 7

Color C & F in
A feed &
Color A in B feed
Normal setting

K 60
C



Color A



Color C

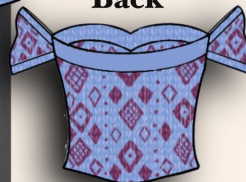


Color F

Front



Back





Cast off edge

K 60 C
Color D in
A Feed
Color E in
B Feed

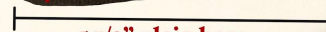


Swatch #6

Jersey stitch with
hounds tooth
punch card

7 1/2"

Normal multi
color setting
Tension 7
Normal setting



5 1/2" plain hem
start
40 needles

Front



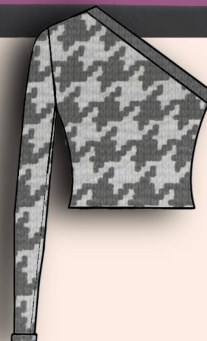
Color D



Color E

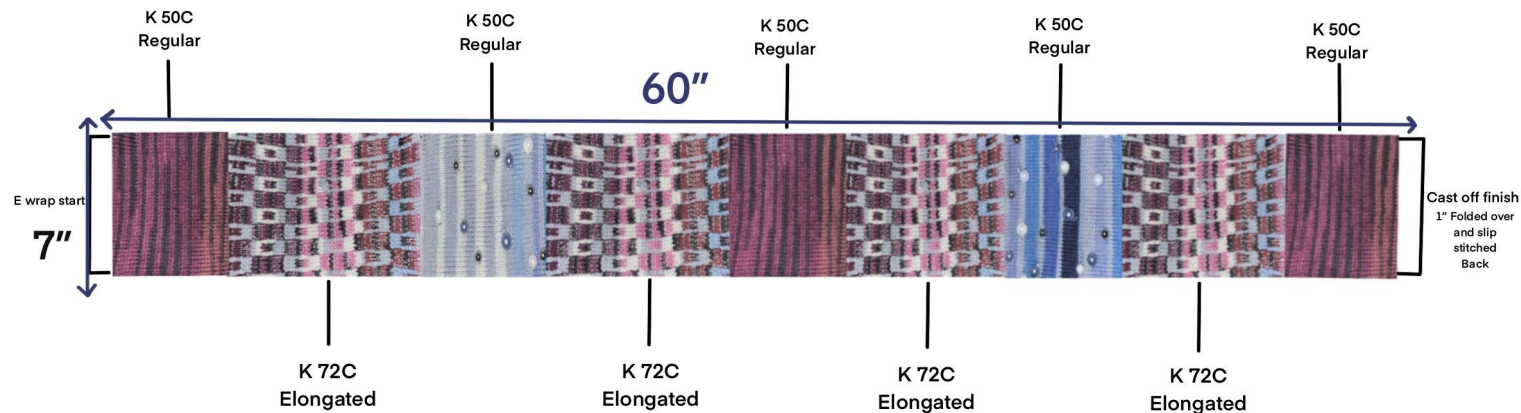


Back



Scarf Knitting Plan

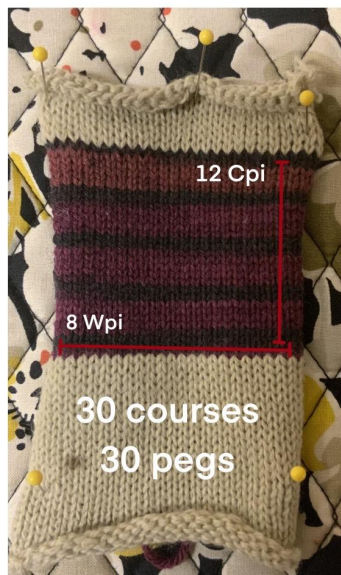
* For punch card
Maroon is in B
feed and Blue
in A feed.



Card # 16 / elongated multi color stitch / 25-0-25 Tension 10

* Multi color
pearls placed
randomly on
the two blue
knitted sections

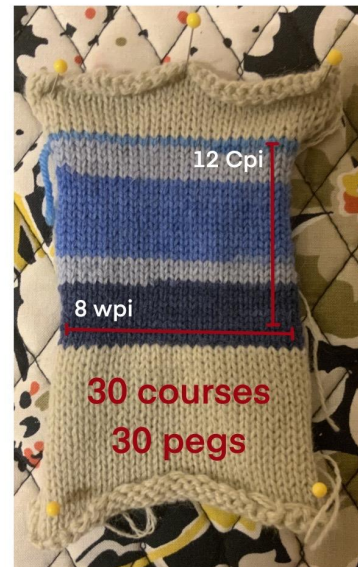
Scarf Tension Swatches



Tension 10



Tension 10
Maroon color in B feed
and Blue in A feed



Tension 10

Yarn Content: size 1 yarn 75% wool 25% Nylon

Notes on Inspiration

- **Abstract Patterns:** Incorporating abstract patterns in various clothing items or accessories can bring a unique touch. Think about fluid, organic shapes or geometric abstractions in the mentioned colors.
 - **Textures:** Experiment with textures like soft silks, flowing chiffons, or even textured fabrics that add depth and dimension to the color palette.
 - **Layering:** Combine different garments or accessories to create layers and depth within the mood board, playing with the different shades to create a harmonious ensemble.
 - **Accessories:** Statement jewelry, scarves, or handbags could add pops of these colors and tie the look together.
- Inspirations:
- **Artwork:** Look for abstract paintings or digital art that encapsulate these colors and their interplay.
 - **Nature:** Orchid hues might be inspired by orchid flowers, while the blues can be reminiscent of the sky or the ocean.
 - **Contemporary Fashion:** Explore contemporary fashion collections that incorporate these colors in abstract or innovative ways.



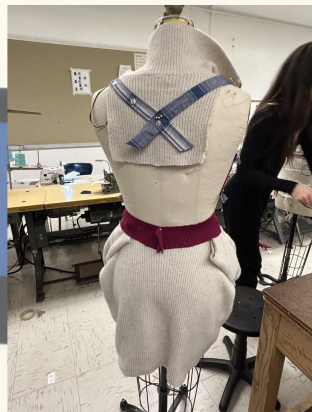


Final Sketch



Draping Process

The process started by cutting the already made garments and draping it onto the dress form and just playing around with the shape and silhouette until I reached my desired product.



Progress Pics



Front



Back

The Final
Look
Pg.1



Side



Alternate Collar
Use on Front

The Final
Look
Pg.2

